

Features

- CMOS Output
- Excellent Phase Noise Performance
- Low Power Consumption
- Tri-state function

Applications

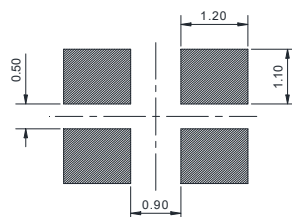
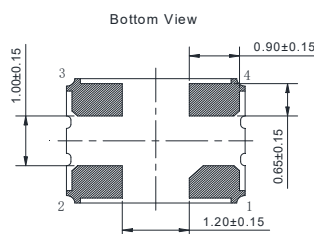
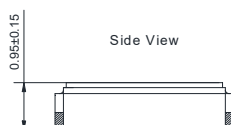
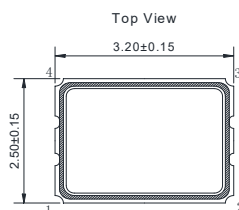
- WLAN
- Bluetooth
- DSC
- DSL
- other IT product



Standard Specifications

Parameter	OSC SMD3225
Output Type	CMOS
Frequency Range	8~70MHz
Frequency Stability	±20ppm/±25ppm/±30ppm
Operating Temperature	-20~70°C/-40~85°C/-40~105°C
Output Load	15pF
Input Current	15mA Max
Supply Voltage	1.62~3.63V
Start-up Time	2ms Max
Duty Cycle	40~60%
Output Voltage High/ Low	0.9VDD Min/ 0.1VDD Max
Rise/Fall Time	5ns
Tri-state	Pin1: 0.7 VDD Min.(High), Output:Enable Pin1: 0.3 VDD Max.(Low), Output:Disable
Phase Jitter	1 ps Max
Aging(at 25 °C)	±3ppm/year Max.
Storage Temperature	-55~125°C

Dimensions (Units : mm)



Recommended Land Pattern

Pin	Function
1	Tri-State
2	GND
3	Output
4	V _{DD}